



# Automated cable identification

Increase production output



# Identify your cables

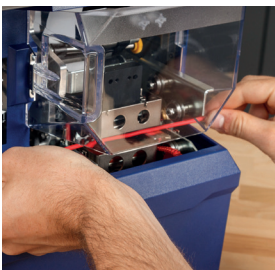
Well identified cables provide an immediate insight into how an installation is connected and they can enable accurate tracking for troubleshooting, service, repairs and replacements. Because of this, durably identified cables have become an important customer requirement for industrial cabled installation & equipment suppliers & service partners. Durably identifying cables offers a number of competitive advantages:



- open up new markets
- increased quality control
- reduced warranty costs
- reduced non-original panel service work
- reduced product recall volume

# Automate your cable identification

Automated cable identification can significantly increase the speed at which cables can be identified. It enables producers to comply with customer requirements, while protecting profitability. Automate cable identification can offer the following advantages:



- increased production output
- increased production efficiency
- increased cable assembly standardisation
- increased worker ergonomics
- reduced cost per identified cable

# With Brady

Brady offers a reliable and complete solution to automate cable identification in order to increase production output. Our solution includes these components:



- durable auto-apply cable labels and sleeves
- reliable auto-apply systems
- custom support, including setup, maintenance and parts
- extensive label testing in in-house laboratories



# Automatic cable identification

## Wrap-around labels

The **Wraptor A6500 Wire Identification Printer Applicator** can significantly increase production output by identifying cables with wrap-around labels in 5 seconds. It automatically prints and applies the label on a wide range of insertable cables, saving up to 10 seconds per identified cable.

The Wraptor A6500 Wire Identification Printer Applicator:

- can greatly increase production output by printing and applying wrap-around cable labels in 5 seconds
- is easy to operate because it can identify a wide range of cables between 1.52 mm and 15.24 mm diameter via a modern user interface with full colour touch screen
- is easy to implement in a variety of production environments thanks to USB ports and ethernet connectivity
- can be used with Brady Workstation apps to design, print and apply a wide range of labels
- allows saving and processing commonly used labels
- can be integrated with Schleuniger Cut & Strip Machines



**Calculate what you could save by applying labels with the Wraptor A6500!**

Click or scan the QR-code



Product Specifications on page 8



# Automated cable identification

## Sleeves

The **BSP45 Automated Sleeve Applicator** can apply a cable sleeve up to 10 seconds faster. This can result in considerable savings on the installed cost of cable sleeves. The BSP45 is designed to remove pre-printed sleeves from their carrier and to squeeze them so a cable can easily be inserted by an operator.

The BSP45 Automated Sleeve Applicator:



- applies sleeves 6-10 seconds faster than manual labelling. Save labour time and resources with automated application
- eliminates the tedious, repetitive task of manually applying sleeves. Automatically remove sleeves from liners, open them for a cable and apply the sleeve with the touch of a pedal
- is a reliable system with a durable construction for high-volume, long term use



**Calculate what you could save by applying sleeves with the BSP45!**

Click or scan the QR-code



Cable sleeves can be printed on-site with the BPP72 Double Sided Sleeve Printer or the BradyPrinter i7100 Industrial Label Printer before they are applied.

The **BBP72 Double Sided Sleeve Printer** is designed to print on the top and bottom of a sleeve simultaneously to identify sleeves in a seamless one-pass operation. BB72 is ideal for large print run quantities and prints on a variety of durable, fade-resistant and smudge-proof heat-shrink sleeves.

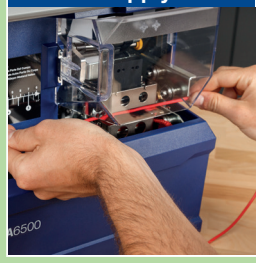


The **BradyPrinter i7100 Industrial Label Printer** is a reliable, heavy-duty and high accuracy sleeve & label printer that quickly prints a wide range of high quality identification materials for a variety of applications including cable identification.



Product Specifications on pages 9, 10 and 11.

Automated print & apply



Specialised high quality identification



Software



Support & services

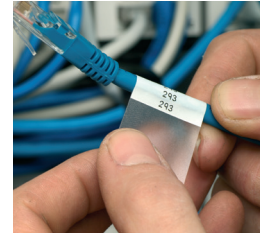
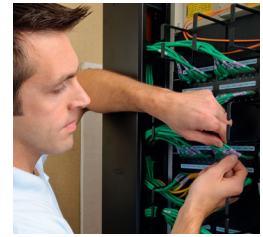
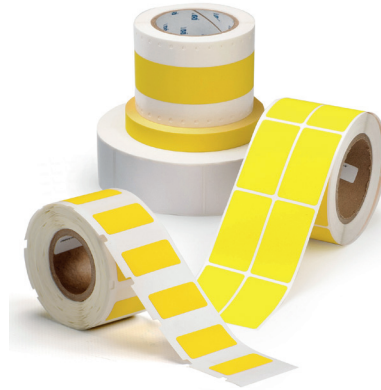


# Durable auto-apply cable labels & sleeve

## Auto-apply cable labels

Brady's wrap around cable labels offer excellent print quality, high resistances versus extreme temperatures, chemicals and fuels and a good fading and abrasion resistance.

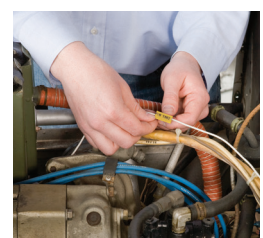
- Self-laminating vinyl cable labels (B-427) have a durable translucent vinyl film with an acrylic pressure sensitive adhesive. The labels are equipped with a white (or other colour options) thermal transfer printable zone and a transparent overlaminating area, which wraps around the label to protect the text from fading and abrasion.
- Polyamide coated nylon cloth (B-499) suitable for wiremarking and general labeling applications. This material meets the halogen free requirements as per the DIN norm.
- Flame retardant cable wrap labels (B-472) are self-extinguishing and prevent flames from propagating. Their special topcoat enables crystal clear THT print quality and excellent chemical resistance. These labels are ideal for high temperature applications.



## Auto-apply cable sleeves

Sleeves are a durable and flexible identification solution that can be moved along a cable until heat shrunk into position.

- PermaSleeve heat-shrink sleeves (B-342) with a full circle design, offer a snug fit and permanent identification. They are fade-resistant, self-extinguishing and smudge-proof. 3:1 shrink ratio.
- Halogen free heat shrink sleeves (B-7641) are made of halogen-free, flexible flame retardant heat shrink polyolefin tubing, offering fire safety properties and minimal smoke emission. 2:1 shrink ratio.
- Diesel resistant sleeves (B-7646) are available in several colours and can resist exposure to fluids, common fuels, lubricants and solvents. 3:1 shrink ratio.





# Support & services

## Service agreements

On top of an included 1 year warranty, Brady offers premium support service agreements for the Wraptor A6500, the BBP72 and the BSP45. Service agreements are fully customisable to your needs and can include premium support by phone and/or support at your premises.

Available service agreement options:

- preventive maintenance
- fast repairs
- replacement devices
- dedicated in-house contact center
- support in 12 languages
- local presence
- man hours included
- no unexpected costs



## Scanners

High quality scanners are available. With portable scanners, you will be able to scan barcodes printed on cable labels and sleeves to monitor production output and manage inventory.

Available scanner services:

- scanner purchasing
- scanner configuration
- scanner integration



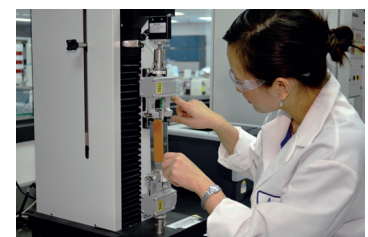
## Integration

Brady also offers advice, support and full collaboration with third parties to help integrate our labeling solutions in your production line.



## In-house laboratory

Brady's in-house laboratories rigorously test our solutions in line with standard testing methods. Our scientists test the performance of complete label constructions including the liner, adhesives, label materials and label top coat to deliver solutions that solve your challenges. Our in-house lab can offer test results on request or test new label requirements when relevant.



# Automatic label print & apply



## Wraprator A6500

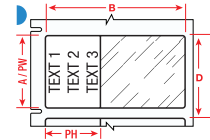
The following part numbers beginning with “WRAP” are specially designed for use with the Wraprator A6500 printer only.



### Self-laminating Vinyl

**Colour:** White/Clear      **Finish:** Matte

Brady’s most popular wire and cable marker. Self-laminating vinyl features white printable area with a clear “tail that wraps around marker. Tail serves as overlamine to protect the print. Superior resistance to abrasion, solvents, water, oil and dirt.



Order Diagram Reference	Colour	Label Width A (mm)	Label Height B (mm)	Printable Area Width PW (mm)	Printable Area Height PH (mm)	Vertical Repeat D (mm)	Min. Wire Diameter (mm)	Max. Wire Diameter (mm)	Labels per Cartridge/Roll	Printer Ribbon
<b>B-427: Self-laminating Vinyl</b>										
▶ WRAP-1-427	White/Transparent	12.70	19.05	12.70	9.53	22.20	2.00	3.00	6800	R4300
▶ WRAP-11-427	White/Transparent	12.70	38.10	12.70	12.70	41.30	4.00	8.10	3600	R4300
▶ WRAP-2-427	White/Transparent	25.40	25.40	25.40	9.53	28.60	2.70	5.10	5300	R4300
▶ WRAP-3-427	White/Transparent	25.40	31.75	25.40	12.70	34.90	3.40	6.10	4300	R4300
▶ WRAP-4-427	White/Transparent	25.40	38.10	25.40	12.70	41.30	4.00	8.10	3600	R4300
▶ WRAP-10-427	White/Transparent	25.40	57.15	25.40	19.05	60.30	6.10	12.10	2500	R4300
▶ WRAP-5-427	White/Transparent	38.10	63.50	38.10	19.05	66.70	6.70	14.20	2200	R4300
▶ WRAP-12-427	White/Transparent	50.80	38.10	50.80	12.70	41.30	4.00	8.10	3600	R4300
▶ WRAP-6-427	White/Transparent	50.80	76.20	50.80	25.40	79.37	8.10	16.20	1900	R4300



### Nylon Cloth

**Colour:** White      **Finish:** Matte

Nylon cloth with permanent adhesive allows labelling in environments with heat, cold, oil and dirt. Ideal for wire and cable marking, electronic component marking, laboratory vial identification, and general labelling.

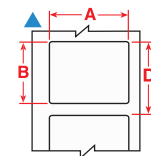


Diagram	Order Reference	Colour	Label Width A (mm)	Label Height B (mm)	Min. Wire Diameter (mm)	Max. Wire Diameter (mm)	Vertical Repeat D (mm)	Labels per Cartridge/Roll	Printer Ribbon
<b>B-499: Nylon Cloth</b>									
▲	WRAP-7-499	White	12.70	19.05	1.52	5.06	22.22	4500	R4300
▲	WRAP-8-499	White	25.40	38.10	4.04	11.13	41.27	2800	R4300
▲	WRAP-9-499	White	50.80	50.80	5.39	15.16	53.97	2100	R4300
▲	WRAP-13-499	White	25.40	25.40	2.69	7.09	28.57	4100	R4300



### Polyimide

**Colour:** White      **Finish:** Matt

B-472 is specifically designed to self-extinguish and prevent flames from propagating. This material is ideal for wire and cable identification in extreme environments, particularly in the aerospace, defense and mass transit industries.

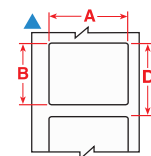


Diagram	Order Reference	Colour	Label Width A (mm)	Label Height B (mm)	Min. Wire Diameter (mm)	Max. Wire Diameter (mm)	Vertical Repeat D (mm)	Labels per Cartridge/Roll	Printer Ribbon
<b>B-472: Polyimide</b>									
▲	WRAP-1-472	White	12.70	19.10	3.30	8.13	22.22	6800	R4300;R6200
▲	WRAP-6-472	White	50.80	76.20	3.30	8.13	79.37	1900	R4300;R6200



# Automatic apply

## BSP45

Find the right durable Brady sleeve materials and ribbons for your wire identification projects.



Order Reference	Colour	Sleeves per Roll	Min. Wire Diameter (mm)	Max. Wire Diameter (mm)	Shrink Ratio	Sleeve height (mm)	Sleeve width (mm)	Recommended Ribbon
<b>B-342 Heat-shrink Polyolefin Sleeve</b>								
SA-3PS-094-1-WT	White	2500	0.58	2.03	3:1	4.60	25.40	R4300; R6600
SA-3PS-094-1-YL	Yellow	2500	0.58	2.03	3:1	4.60	25.40	R4300; R6600
SA-3PS-125-1-WT	White	2500	1.17	2.79	3:1	6.00	25.40	R4300; R6600
SA-3PS-125-1-YL	Yellow	2500	1.17	2.79	3:1	6.00	25.40	R4300; R6600
SA-3PS-125-2-WT	White	2500	1.17	2.79	3:1	6.00	50.80	R4300; R6600
SA-3PS-125-2-YL	Yellow	2500	1.17	2.79	3:1	6.00	50.80	R4300; R6600
SA-3PS-187-1-WT	White	2500	1.57	3.81	3:1	8.50	25.40	R4300; R6600
SA-3PS-187-1-YL	Yellow	2500	1.57	3.81	3:1	8.50	25.40	R4300; R6600
SA-3PS-187-2-WT	White	2500	1.57	3.81	3:1	8.50	50.80	R4300; R6600
SA-3PS-187-2-YL	Yellow	2500	1.57	3.81	3:1	8.50	50.80	R4300; R6600
SA-3PS-250-1-WT	White	2500	2.39	5.46	3:1	11.15	25.40	R4300; R6600
SA-3PS-250-1-YL	Yellow	2500	2.39	5.46	3:1	11.15	25.40	R4300; R6600
SA-3PS-250-1-YL-J	Yellow	7500	2.39	5.46	3:1	11.15	25.40	R4300; R6600
SA-3PS-250-2-WT	White	2500	2.39	5.46	3:1	11.15	50.80	R4300; R6600
SA-3PS-250-2-YL	Yellow	2500	2.39	5.46	3:1	11.15	50.80	R4300; R6600
SA-3PS-375-1-WT	White	1000	3.18	8.13	3:1	16.40	25.40	R4300; R6600
SA-3PS-375-1-YL	Yellow	1000	3.18	8.13	3:1	16.40	25.40	R4300; R6600
SA-3PS-375-1-YL-J	Yellow	2500	3.18	8.13	3:1	16.40	25.40	R4300; R6600
SA-3PS-375-2-WT	White	1000	3.18	8.13	3:1	16.40	50.80	R4300; R6600
SA-3PS-375-2-YL	Yellow	1000	3.18	8.13	3:1	16.40	50.80	R4300; R6600
<b>B-7641 Heat-shrink Polyolefin Sleeve</b>								
SA-2LSZH-125-1-WT	White	2500	1.57	2.79	2:1	6.00	25.40	R4300; R6600
SA-2LSZH-125-1-YL	Yellow	2500	1.57	2.79	2:1	6.00	25.40	R4300; R6600
SA-2LSZH-125-2-WT	White	2500	1.57	2.79	2:1	6.00	50.80	R4300; R6600
SA-2LSZH-125-2-YL	Yellow	2500	1.57	2.79	2:1	6.00	50.80	R4300; R6600
SA-2LSZH-187-1-WT	White	2500	2.39	3.83	2:1	8.50	25.40	R4300; R6600
SA-2LSZH-187-1-YL	Yellow	2500	2.39	3.83	2:1	8.50	25.40	R4300; R6600
SA-2LSZH-187-2-WT	White	2500	2.39	3.83	2:1	8.50	50.80	R4300; R6600
SA-2LSZH-187-2-YL	Yellow	2500	2.39	3.83	2:1	8.50	50.80	R4300; R6600
SA-2LSZH-250-1-WT	White	2500	3.17	5.46	2:1	11.15	25.40	R4300; R6600
SA-2LSZH-250-1-YL	Yellow	2500	3.17	5.46	2:1	11.15	25.40	R4300; R6600
SA-2LSZH-250-2-WT	White	2500	3.17	5.46	2:1	11.15	50.80	R4300; R6600
SA-2LSZH-250-2-YL	Yellow	2500	3.17	5.46	2:1	11.15	50.80	R4300; R6600
<b>B-7646 Diesel-resistant Heat-shrink Polyolefin Sleeve</b>								
SA-3DR-125-1-YL	Yellow	2500	1.20	3.20	3:1	6.00	25.40	R6600
SA-3DR-125-2-YL	Yellow	2500	1.20	3.20	3:1	6.00	50.80	R6600
SA-3DR-187-1-YL	Yellow	2500	1.50	4.80	3:1	8.50	25.40	R6600
SA-3DR-187-2-YL	Yellow	2500	1.50	4.80	3:1	8.50	50.80	R6600
SA-3DR-250-1-YL	Yellow	2500	1.80	6.40	3:1	11.15	25.40	R6600
SA-3DR-250-2-YL	Yellow	2500	1.80	6.40	3:1	11.15	50.80	R6600

Brady sleeves have been designed to work seamlessly with the BSP45.

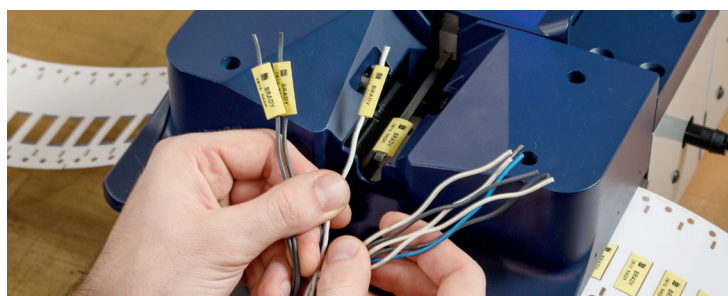
## Mandrels and dies

Order Reference	Description
DIE-094-1-BSP45	BSP45 Die set for 25mm wide .094-size sleeves
DIE-125-1-BSP45	BSP45 Die set for 25mm wide .125-size sleeves
DIE-125-2-BSP45	BSP45 Die set for 50 mm wide .125-size sleeves
DIE-187-1-BSP45	BSP45 Die set for 25mm wide .187-size sleeves
DIE-187-2-BSP45	BSP45 Die set for 50mm wide .187-size sleeves
DIE-250-1-BSP45	BSP45 Die set for 25mm wide .250-size sleeves
DIE-250-2-BSP45	BSP45 Die set for 50mm wide .250-size sleeves
DIE-375-1-BSP45	BSP45 Die set for 25mm wide .375-size sleeves
DIE-375-2-BSP45	BSP45 Die set for 50mm wide .375-size sleeves
MANDREL-094-BSP45	BSP45 Mandrel for .094-size sleeves
MANDREL-125-BSP45	BSP45 Mandrel for .125-size sleeves
MANDREL-187-BSP45	BSP45 Mandrel for .187-size sleeves
MANDREL-250-BSP45	BSP45 Mandrel for .250-size sleeves
MANDREL-375-BSP45	BSP45 Mandrel for .375-size sleeves

## BSP45 automated sleeve applicator

Order Reference	Description
BSP45-B7646-EU	BSP45 Automated Sleeve Applicator for Dieselsleeves - EU
BSP45-B7646-US	BSP45 Automated Sleeve Applicator for Dieselsleeves - US
BSP45-EU	BSP45 Automated Sleeve Applicator - EU
BSP45-US	BSP45 Automated Sleeve Applicator - US

This Applicator comes in a cardboard box holding a user manual, a power cord, a foot pedal and one set of dies and one mandrel for your choice of sleeve size.



# Print only

## BBP72



Printer Specifications	
<b>Description</b>	Higher volume printer designed specifically for printing double-sided sleeves in larger quantity print job sizes
<b>Applications</b>	High Volume Permasleeve™ Wire Marking Sleeves Printing (double-sided format only).
<b>Hours of Operation</b>	24 hours/7 days
<b>Recommended Usage per Day</b>	7000
<b>Software Compatibility</b>	Brady Workstation, LabelMark, Windows based driver for 3rd party software use, CodeSoft
<b>Colour Capability</b>	Monocolour
<b>Connectivity Options</b>	Serial, USB. Optional: Ethernet
<b>Stand-alone Printing (Detached from PC)</b>	Stand-alone & Peripheral
<b>Cutter</b>	None
<b>Hardware Options</b>	Cutter
<b>Internal Memory Capacity</b>	64 MB
<b>Memory - Ram/Flash</b>	8 MB
<b>Label Dimension Limits</b>	Max. Width: 106.00 mm Min. Width: 4.00 mm Max. Height: 1000 mm Min. Height: 5.00 mm
<b>Maximum Print Width (mm)</b>	105.60 mm
<b>Print Speed (mm/sec)</b>	125 mm/sec
<b>Print Technology</b>	Thermal Transfer
<b>Print Resolution (dpi)</b>	300 dpi
<b>Height x Width x Depth</b>	395.00 mm x 248.00 mm x 554.00 mm
<b>Weight</b>	21

### BBP72 double-sided printer

Article No.	Order Reference	Description
300 dpi		
361110	BBP72-34L-EUR + Installation	BBP72 Double-sided Sleeve Printer

### BBP72 double-sided printer accessories

Article No.	Order Reference	Description
133251	PCK-6	Printer Cleaning Kit - Thermal Transfer Printers

### Specialty material recommendations

Specialty Material Recommendations	
Raised Panel labels (B-593, B-7593)	Not Recommended
Heatex Cable Markers	Not Recommended
PermaSleeves (B-342, B-345)	Recommended (Double-sided Format Only)
Diesel Resistant Sleeves (B-7646)	Recommended
ZH PermaSleeve Markers (B-7641)	Recommended (Double-sided Format Only)
HX PermaSleeve Markers (B-7642)	Recommended (Double-sided Format Only)



#### Industry specifications

Together with Brady ribbon, the heat-shrink sleeves meet a variety of industry specifications



Industry Specifications	PermaSleeve PS (B-342)	PermaSleeve HT (B-345)	PermaSleeve LSZH (B-7641)	PermaSleeve HX (B-7642)
SAE-AMS-DTL-23053/5C (Class 1)	●			●
SAE-AS-81531	●	●	●	●
SAE-AS-5942 (Sec.4.1)			●	
EN-45545-2			●	
LUL 2-01001-002			●	
MIL-STD-202 method 215K	●	●	●	●
NASA SP-R-022A Outgassing		●		
RoHS Recognised	●	●	●	●
UL Recognised	●			
<b>Tested Per:</b>				
SAE- DTL- 2305 3/5 Class 1		●		
ASTM E162	●	●	●	●
ASTM E662	●	●	●	●

# Print only

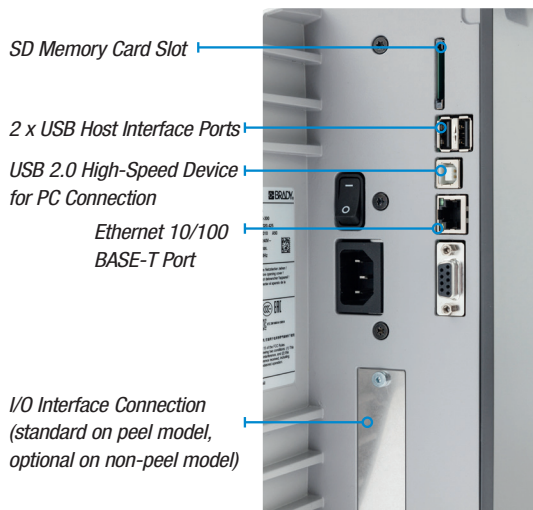
## BradyPrinter i7100



Printer Specifications	
<b>Description</b>	Higher volume printer designed specifically for printing double-sided sleeves in larger quantity print job sizes
<b>Applications</b>	High Volume Permasleeve™ Wire Marking Sleeves Printing (double-sided format only).
<b>Hours of Operation</b>	24 hours/7 days
<b>Recommended Usage per Day</b>	7000
<b>Software Compatibility</b>	Brady Workstation, LabelMark, Windows based driver for 3rd party software use, CodeSoft
<b>Colour Capability</b>	Monocolour
<b>Connectivity Options</b>	Serial, USB. Optional: Ethernet
<b>Stand-alone Printing (Detached from PC)</b>	Stand-alone & Peripheral
<b>Cutter</b>	None
<b>Hardware Options</b>	Cutter
<b>Internal Memory Capacity</b>	64 MB
<b>Memory - Ram/Flash</b>	8 MB
<b>Label Dimension Limits</b>	Max. Width: 106.00 mm Min. Width: 4.00 mm Max. Height: 1000 mm Min. Height: 5.00 mm
<b>Maximum Print Width (mm)</b>	105.60 mm
<b>Print Speed (mm/sec)</b>	125 mm/sec
<b>Print Technology</b>	Thermal Transfer
<b>Print Resolution (dpi)</b>	300
<b>Height x Width x Depth</b>	395.00 mm x 248.00 mm x 554.00 mm
<b>Weight</b>	21

Article No.	Order Reference	Description
<b>300 dpi</b>		
149046	i7100-300-EU	BradyPrinter i7100 300 dpi - EU
197353	i7100-300-EU+LM	BradyPrinter i7100 300 dpi - EU with LabelMark Software
149049	i7100-300-P-EU	BradyPrinter i7100 300 dpi - EU with Peel function
197354	i7100-300-P-EU+LM	BradyPrinter i7100 300 dpi - EU with Peel function and LabelMark Software
149067	i7100-300-UK	BradyPrinter i7100 300 dpi - UK
197357	i7100-300-UK+LM	BradyPrinter i7100 300 dpi - UK with LabelMark Software
149068	i7100-300-P-UK	BradyPrinter i7100 300 dpi - UK with Peel function
197358	i7100-300-P-UK+LM	BradyPrinter i7100 300 dpi - UK with Peel function and LabelMark Software
197690	i7100-300-US	BradyPrinter i7100 300 dpi - US
197349	i7100-300-US+LM	BradyPrinter i7100 300 dpi - US with LabelMark Software
197689	i7100-300-P-US	BradyPrinter i7100 300 dpi - US with Peel function
197350	i7100-300-P-US+LM	BradyPrinter i7100 300 dpi - US with Peel function and LabelMark Software
<b>600 dpi</b>		
149047	i7100-600-EU	BradyPrinter i7100 600 dpi - EU
197355	i7100-600-EU+LM	BradyPrinter i7100 600 dpi - EU with LabelMark Software
149052	i7100-600-P-EU	BradyPrinter i7100 600 dpi - EU with Peel function
197356	i7100-600-P-EU+LM	BradyPrinter i7100 600 dpi - EU with Peel function and LabelMark Software
149066	i7100-600-UK	BradyPrinter i7100 600 dpi - UK
197359	i7100-600-UK+LM	BradyPrinter i7100 600 dpi - UK with LabelMark Software
149065	i7100-600-P-UK	BradyPrinter i7100 600 dpi - UK with Peel function
197360	i7100-600-P-UK+LM	BradyPrinter i7100 600 dpi - UK with Peel function and LabelMark Software
197692	i7100-600-US	BradyPrinter i7100 600 dpi - US
197351	i7100-600-US+LM	BradyPrinter i7100 600 dpi - US with LabelMark Software
197691	i7100-600-P-US	BradyPrinter i7100 600 dpi - US with Peel function
197352	i7100-600-P-US+LM	BradyPrinter i7100 600 dpi - US with Peel function with LabelMark Software

## Interfaces on the back of the device



Specialty Material Recommendations	
Raised Panel labels (B-593, B-7593)	Recommended
Heatex Cable Markers	Recommended
PermaSleeves	Recommended (With 2-pass reinsert of media for double-sided)
Diesel Resistant Sleeves (B-7646)	Recommended (With 2-pass reinsert of media double-sided format)
ZH PermaSleeve Markers (B-7641)	Recommended (With 2-pass reinsert of media for double-sided format)
HX PermaSleeve Markers (B-7642)	Recommended (With 2-pass reinsert of media for double-sided format)
Self-laminating Labels (B-427)	Recommended

## BradyPrinter i7100 accessories

Art. No.	Order Reference	Description
	133251 PCK-6	Printer Cleaning Kit - Thermal Transfer Printers
	149043 i7100-PR-120mm	120mm Platen Roller with synthetic rubber coating
	149044 i7100-PRS-120mm	120mm Platen Roller with silicone rubber coating
	149048 i7100-PR-25mm	25mm Platen Roller with synthetic rubber coating
	149051 i7100-RAR-120mm	120mm Rewind Assist Roller with synthetic rubber coating
	149054 i7100-PR-80mm	80mm Platen Roller with synthetic rubber coating
	149055 i7100-PR-50mm	50mm Platen Roller with synthetic rubber coating
	149069 i7100-CUTTER+TRAY	Cutter CU400 with Tray
	149070 i7100-ANTI-S-BRUSH	Antistatic Brush
	149071 i7100-IO-LABEL-BOX	Label Selection I/O Box
	149072 i7100-PS1000MP	Present Sensor PS1000MP
	149073 i7100-IO-CONNECTOR	I/O Interface Connector SUB-D 25pins
	149074 i7100-RG400-PLATE	Rewind Guide Plate RG400
	149075 i7100-PS900	Present Sensor PS900
	149077 i7100-IO-INTERFACE	I/O Interface
	149078 i7100-PERF-CUTTER	Perforation Cutter PCU400
	149080 i7100-BT-USB-ADAPT	Bluetooth USB Adapter
	149131 i7100-WLAN-EXANT	i7100 USB Wlan Stick with External Antenna
	149132 i7100-ADAPTER-100	i7100 Adapter for 100mm Core
	149135 i7100-PPLTEXT-410	i7100 Extended Peel off plate DP410

# Brady Corporation

Our mission is to identify and protect people, products and places



## COMPANY OVERVIEW

BRADY was founded in 1914 in Eau Claire, Wisconsin, as W.H. BRADY Co., and renamed BRADY Corporation in 1998. The company began selling products internationally in 1947. In 1984, BRADY went public, with stock trading on the Nasdaq Stock Market, and in 1999, moved trading of its stock to the New York Stock Exchange, where it trades under the symbol BRC. The company's global headquarters is in Milwaukee, Wisconsin.

## BRADY MANUFACTURES AND MARKETS:

- products for identification and safety applications such as signs and markers, printing systems and software to produce identification products on-site and on demand
- products for wire identification, including labelling materials and tools for wire and cable marking in the electrical, datacom and telecommunication markets
- high-performance identification products, including labels and signs that remain legible and highly adhesive even in harsh environments
- products that identify people and enhance security by ensuring the right persons are in the right places at the right time

## OPERATIONS – SOME FACTS:

- 6500 employees around the world
- Operations in 29 countries
- Distribution in more than 100 countries through more than 4,400 distributor partners



### Africa

Randburg, South Africa  
Tel.: +27 11 704 3295  
Email: africa@bradycorp.com

### Benelux

Zele, Belgium  
Tel.: +32 (0) 52 45 78 11  
Email: benelux@bradycorp.com

### Central & Eastern Europe

Bratislava, Slovakia  
Tel.: +421 2 3300 4800  
Email: central\_europe@bradycorp.com

### Denmark

Odense  
Tel.: +45 66 14 44 00  
Email: denmark@bradycorp.com

### France

Roncq  
Tel.: +33 (0) 3 20 76 94 48  
Email: france@bradycorp.com

### Germany, Austria & Switzerland

Egelsbach, Germany  
Tel.: +49 (0) 6103 7598 660  
Email: germany@bradycorp.com

### Hungary

Budaörs  
Tel.: +36 23 500 275  
Email: central\_europe@bradycorp.com

### Italy

Gorgonzola  
Tel.: +39 02 26 00 00 22  
Email: italy@bradycorp.com

### Middle East FZE

Dubai, UAE  
Tel.: +971 4881 2524  
Email: me@bradycorp.com

### Norway

Kjeller  
Tel.: +47 70 13 40 00  
Email: norway@bradycorp.com

### Romania

Bucharest  
Tel.: +40 21 202 3032  
Email: central\_europe@bradycorp.com

### Russia

Moscow  
Tel.: +7 495 269 47 87  
Email: central\_europe@bradycorp.com

### Spain & Portugal

Madrid, Spain  
Tel.: +34 900 902 993  
Email: spain@bradycorp.com,  
portugal@bradycorp.com

### Sweden, Finland, Baltic states

Kista, Sweden  
Tel.: +46 (0) 8 590 057 30  
Email: sweden@bradyeurope.com

### Turkey

Istanbul  
Tel.: +90 212 264 02 20 / 264 02 21  
Email: turkey@bradycorp.com

### UK & Ireland

Banbury, UK  
Tel.: +44 (0) 1295 228 288  
Email: uk@bradycorp.com



To help minimise our impact on the environment, Brady limits its number of reprints. Updated versions are always available for download on [www.bradyeurope.com](http://www.bradyeurope.com).

Search for: EUR-M-953-EN

© 2018 Brady Worldwide, Inc. All Rights Reserved.

Your distributor

05/02/2018

[www.bradyeurope.com](http://www.bradyeurope.com)